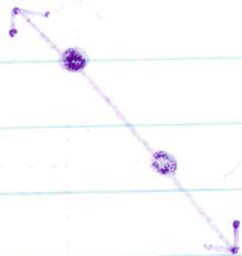


real world Problems



6-2B

Pg 365

10-18 even, 20, 21, 27, 24, 28

10. $x\text{-int} = 6$
 $y\text{-int} = -10$

12. $x\text{-int} = -3\frac{1}{3}$
 $y\text{-int} = -2\frac{1}{2}$

14. $x\text{-int} = \frac{1}{3}$
 $y\text{-int} = \frac{1}{2}$

16. $x\text{-int} = \frac{1}{2}$
 $y\text{-int} = -\frac{1}{3}$

18. $x\text{-int} = 6$
 $y\text{-int} = 10$

20. $x\text{-int} (120, 0)$ If store only purchased
 Jeans, they could buy 120 pairs

$y\text{-int} (0, 90)$ = If only bought
 Kakis they could buy 90 pairs

21. $x\text{-int}; (3750)$
 If only Animals w/ 4 legs only

$y\text{-int} (0, 750)$ Animals w/ 2 legs only